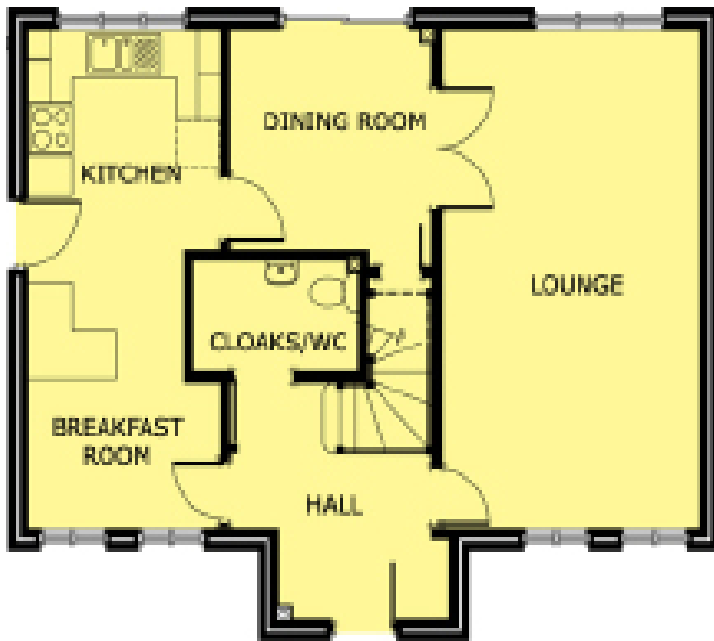


# STRATHCARRON PARK

Paisley

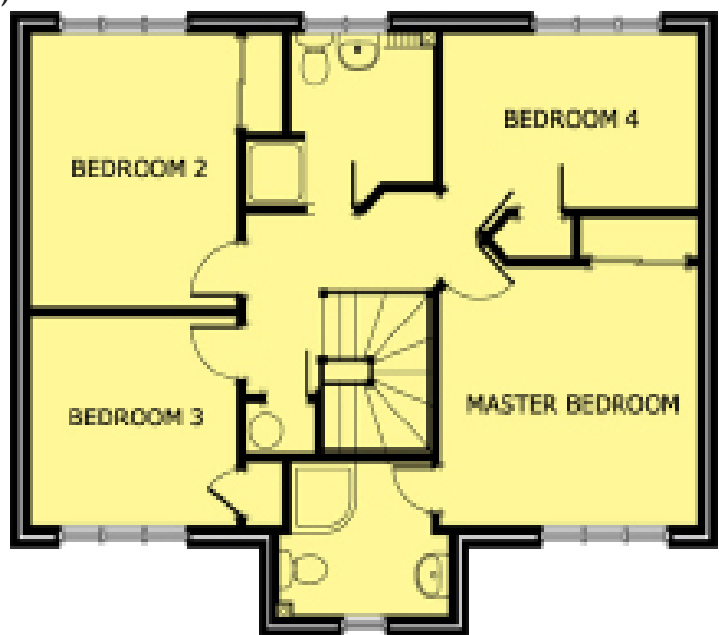
## THE HURST



GROUND FLOOR



LIVING ROOM	3540 X 6238
DINING ROOM	2794 X 2773
KITCHEN	2650 X 4376 (max)
BREAKFAST ROOM	2650 X 1862
BEDROOM 1	3564 X 33169
BEDROOM 2	2875 X 3482
BEDROOM 3	2875 X 2692
BEDROOM 4	3575 X 2243
BARTHROOM	2005 X 1926
EN-SUITE	1978 X 1983



FIRST FLOOR

